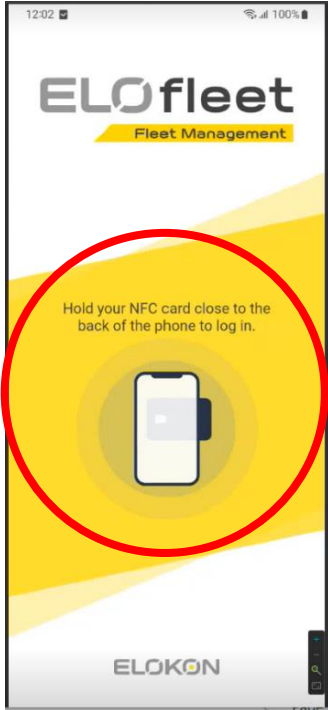


ELOfleet Field Update Process to Extend Phone Battery Life

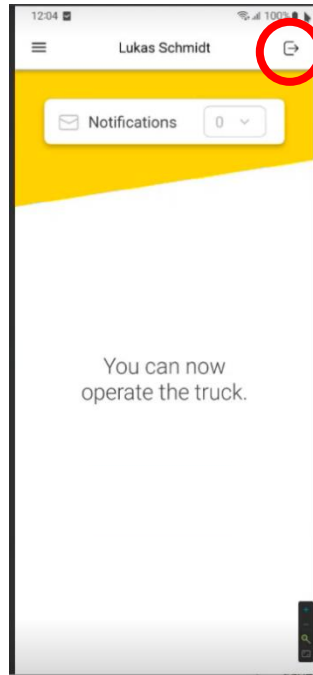
This process enables the ELOfleet phone battery to last longer when the vehicle battery is disconnected (for example, over weekends/holidays when the vehicle battery is recharging).

TASK 1 of 3: Update the ELOfleet app firmware.

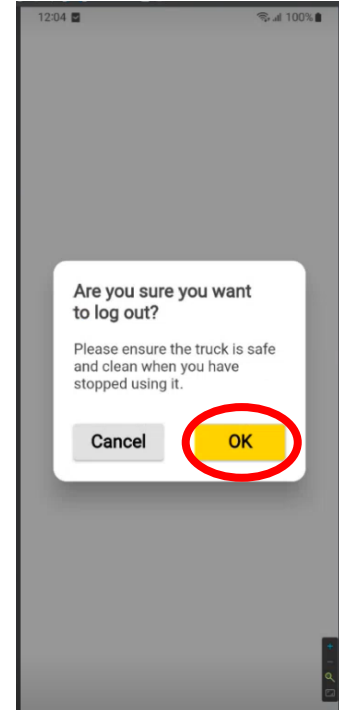
1.1 Log in to the ELOfleet system by using an authorized ID card.



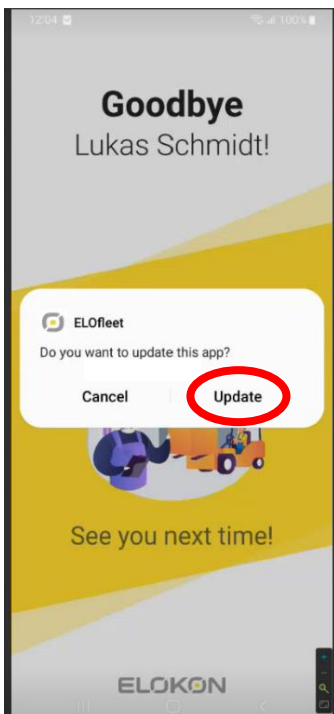
1.2 Complete the safety checklist, if required, then tap the logout icon to exit the app:



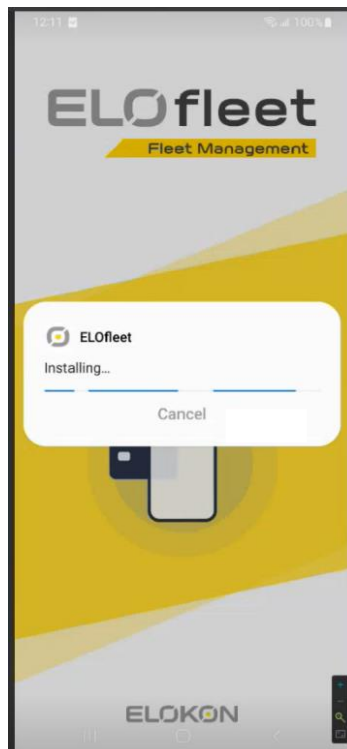
1.3 When prompted, tap OK to log out:



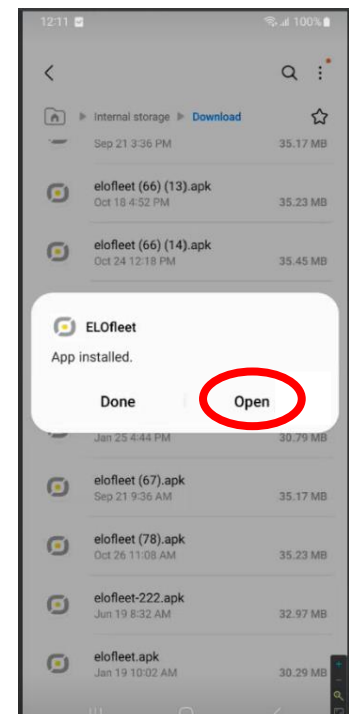
1.4 When prompted, tap Update to update the ELOfleet app:



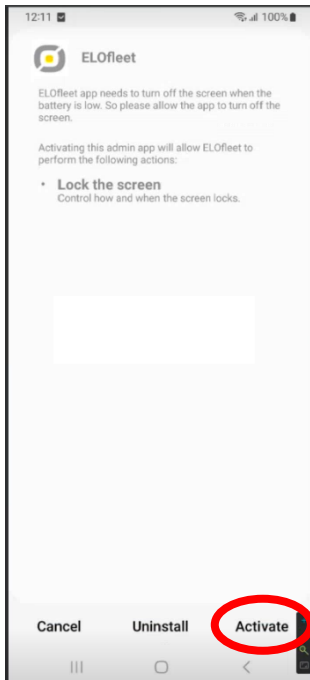
1.5 The ELOfleet app update will load.



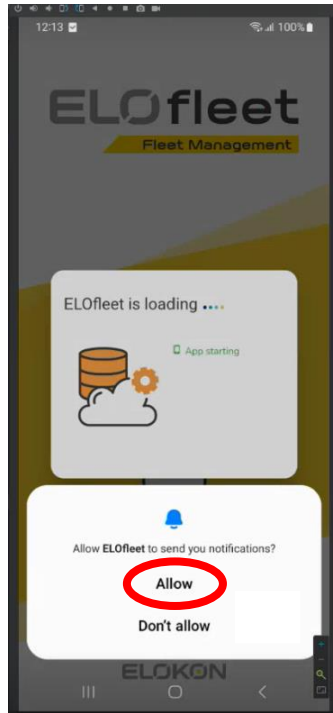
1.6 After the app update installs, tap Open to open the ELOfleet app:



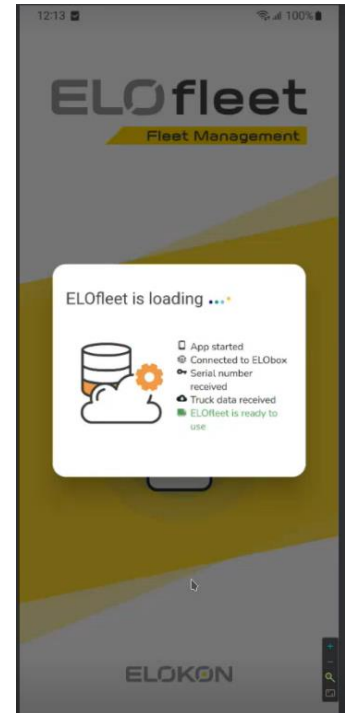
1.7 When the ELOfleet app opens, tap **Activate** to enable the app to shut down the screen to save power:



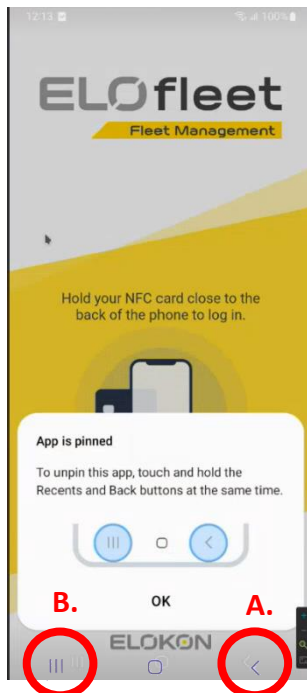
1.8 When prompted, tap **Allow** to enable notifications:



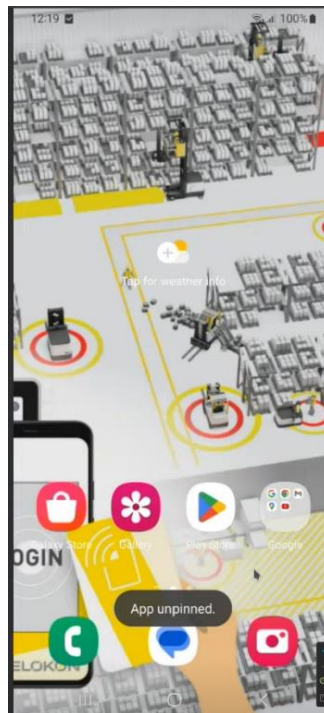
1.9 The ELOfleet app will finish loading.



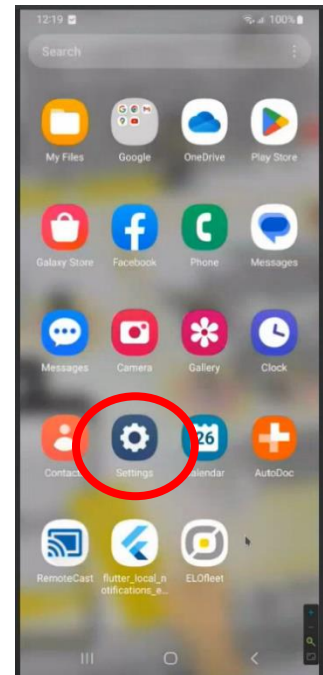
1.10 **A.** Tap and hold the “Back” button and then simultaneously **B.** tap the “Recent” button to unpin the ELOfleet app:



1.11 The ELOfleet phone should return to its home screen.



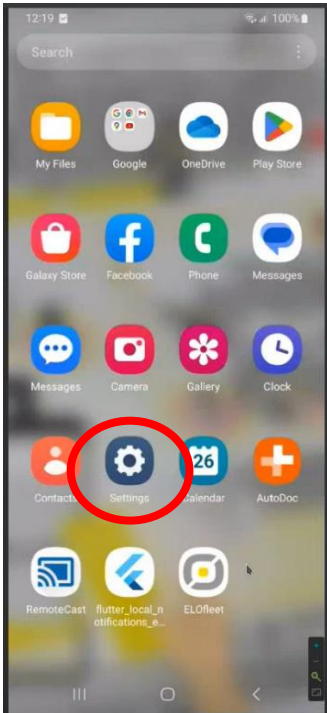
1.12 If necessary, swipe the phone screen to go to the screen that displays the **Settings** app:



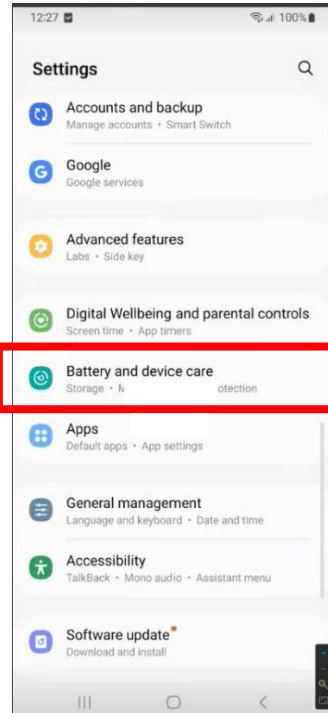
END OF TASK 1.

TASK 2 of 3: Enable the ELOfleet phone's "Protect battery" setting.

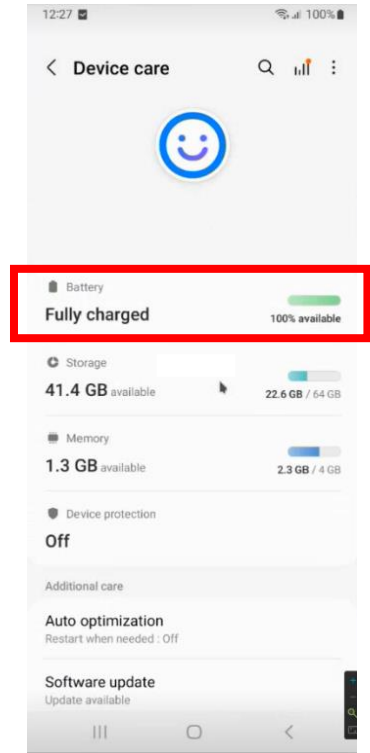
2.1 From the main phone screen, tap the **Settings** app.



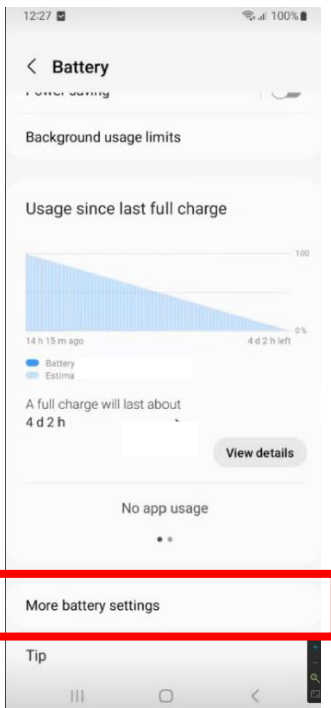
2.2 Scroll down to **Battery and device care** and tap that setting:



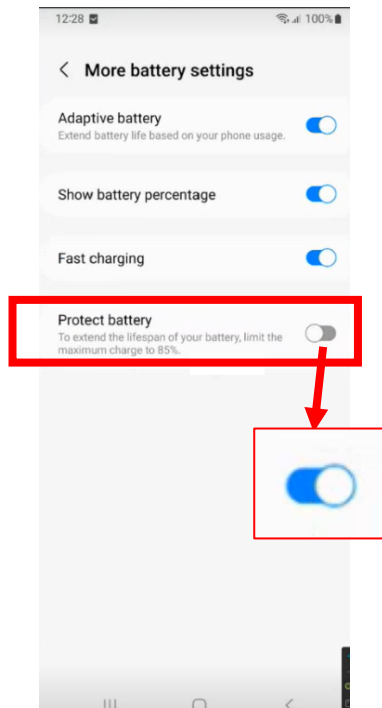
2.3 Tap the **Battery** setting:



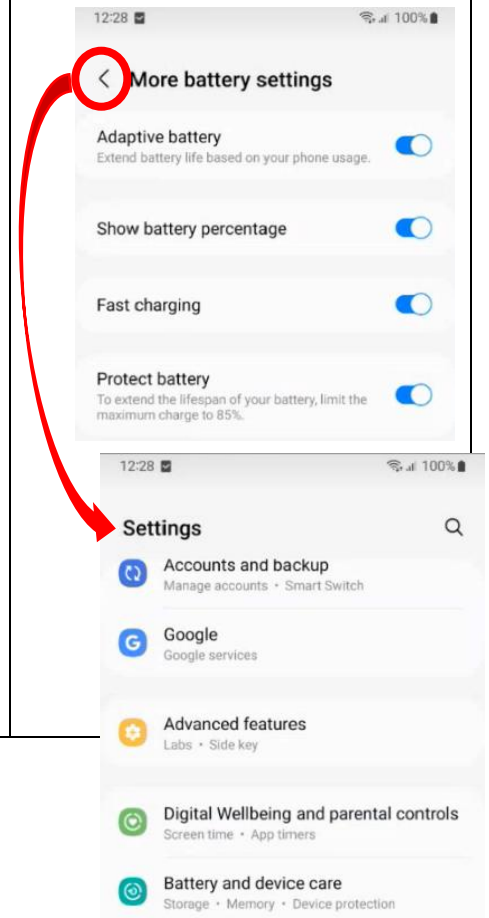
2.4 Scroll down to **More battery settings** and tap that setting:



2.5 Locate the **Protect battery** setting and turn it **ON**.



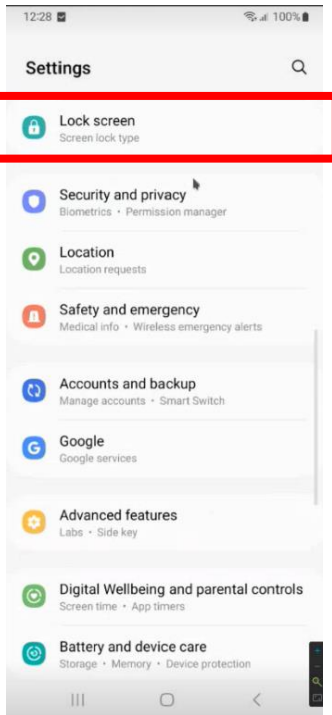
2.6 Tap the "Back" button repeatedly to return to the **Settings** screen.



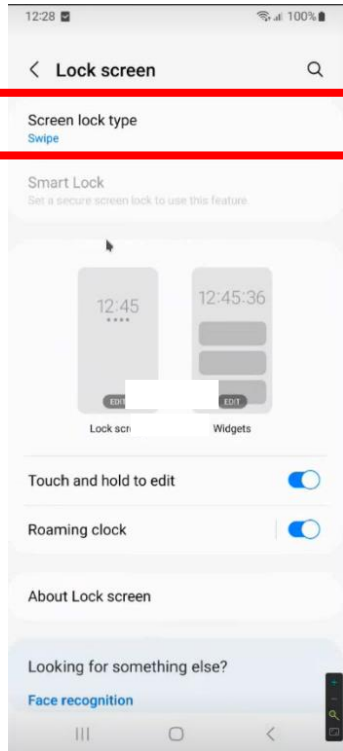
END OF TASK 2.

TASK 3 of 3: Set the ELOfleet phone's "Lock screen" setting to "None."

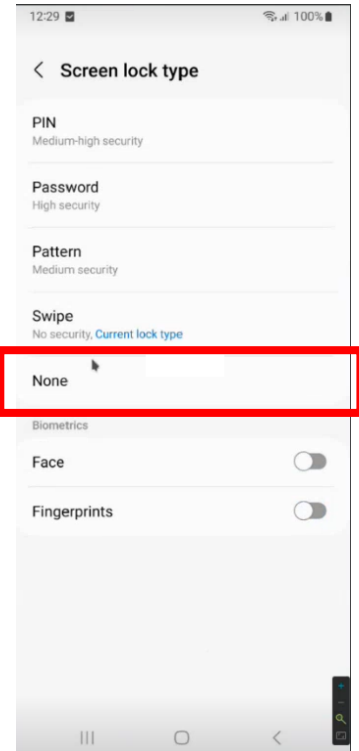
3.1 On the **Settings** screen, scroll down to **Lock screen** and tap that setting:



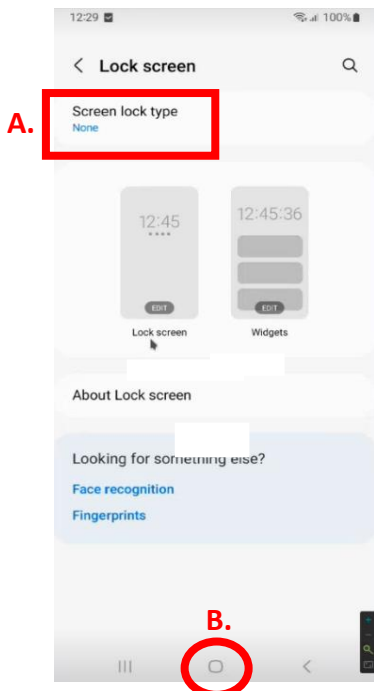
3.2 Tap the **Screen lock type** setting:



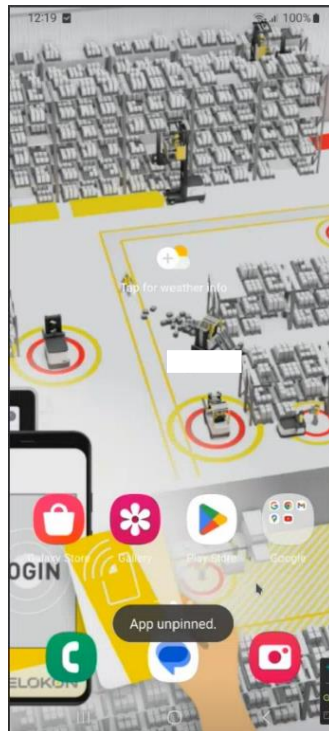
3.3 Tap the **None** setting:



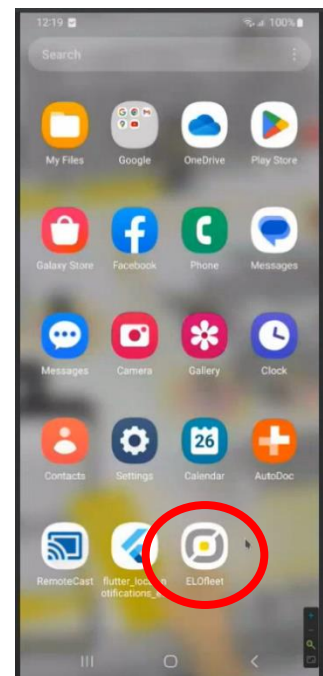
3.4 **A.** Confirm that the **Screen lock type** setting says **None**, and then **B.** tap the "Home" icon to return to the phone's home screen:



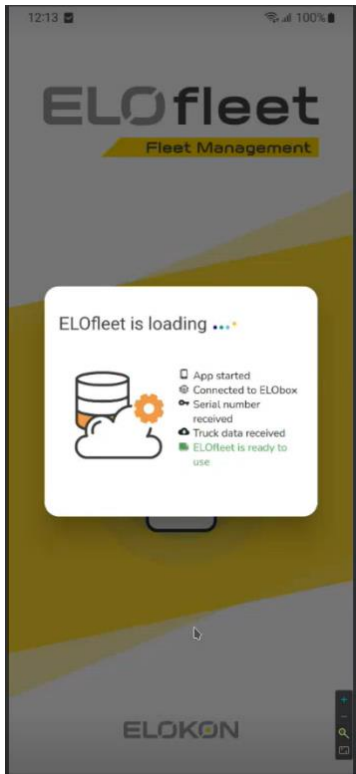
3.5 The ELOfleet phone should return to its home screen.



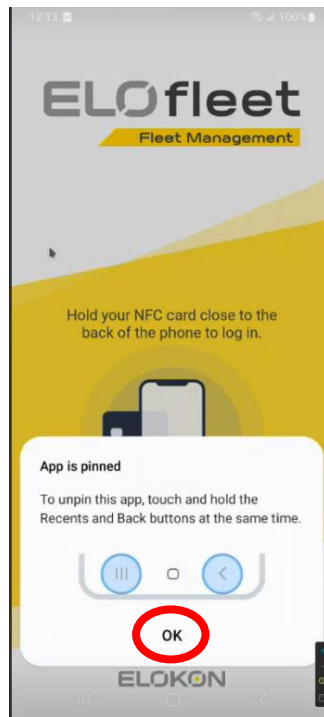
3.6 If necessary, swipe the phone screen to go to the screen that displays the **ELOfleet app**, then tap the **ELOfleet app** to re-launch it.



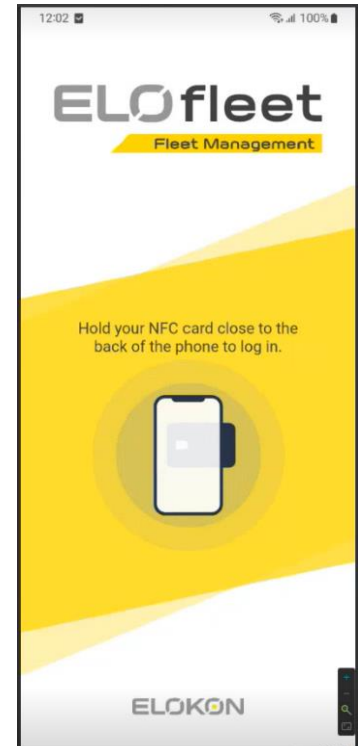
3.7 The ELOfleet app will load.



3.8 Tap the **OK** button to re-pin the ELOfleet app and return it to normal operation.



3.9 The ELOfleet app should return to normal operation.



END OF TASK 3.

END OF ELOfleet FIELD UPDATE PROCESS TO EXTEND PHONE BATTERY LIFE.